

# adore

HOME MAGAZINE

BYRON  
BAY

*The destination  
of choice for  
creatives and  
design lovers*

## MODERN *Mediterranean* EDITION

*KITCHEN*  
TRENDS



*We serve up the hottest kitchen trends for 2025*



9 772204 107007

AUTUMN 2025 AUS \$13.95 INC GST



# Kave Home

## FURNITURE AND HOMEWARES

Mediterranean design  
meets Australian living  
in The Premium Indoor  
Collection.

Crafted with the  
highest quality  
materials and finishes,  
The Premium Indoor  
range brings longevity  
and elevated interiors to  
design enthusiasts.



Discover  
the collection  
in store & online  
@KaveHome\_au  
KaveHome.com.au

21

72

33

48

## contents

- 2

**EDITOR'S LETTER**
- 6

**PRODUCT TRENDS**  
This issue we explore products inspired  
by the Greek Islands, and decor with  
curves and waves.
- 10

**PRODUCT NEWS**
- 13

**KITCHEN TRENDS 2025**  
We serve up the hottest kitchen  
trends for 2025, from Viola marble to  
integrated handles, and everything in  
between.
- 26

**TOP 8 BAR STOOLS**
- 29

**HOME TOURS**  
We visit four homes that riff on the  
Mediterranean tradition with a modern  
twist.
- 78

**OUTDOOR NEWS**
- 80

**BYRON BAY**  
With a flurry of new hotels and  
restaurants on the scene, Byron Bay  
is the hottest travel destination for  
creatives and design lovers.
- 88

**WHAT TO PACK**

## CREDITS

**Publisher**  
Adore Home Magazine

**Editor-in-chief, designer and product editor**  
Loni Parker info@adoremagazine.com

**Sub-editor**  
Casey Hutton caseyhutton.com

**Writers**  
Casey Hutton caseyhutton.com  
Nichola Davies nicholadavies.com

**Photographers**  
Alicia Taylor aliciataylorphotography.com  
Andy Macpherson andymacpherson.studio  
Anson Smart ansonsmart.com  
Arne Studio arnestudio.com.au  
Coast Park Creative coastparkcreative.com  
David Chatfield davidchatfield.studio  
Ethan Smart ethansmartphoto.com  
Jessie Prince jessieprince.com.au  
Lauren Miller Photography lauren-miller.com  
Nat Spada natspada.com  
Oli Ayo @oli\_ayo  
Sophie Miller sophiemiller.au

**Contact**  
info@adoremagazine.com  
www.adoremagazine.com

**Social**  
like us on facebook.com/adorehomemagazine  
find us on instagram @adoremagazine

Views expressed by the author are not necessarily  
that of the publisher. Whilst all care is taken in the  
preparation of this publication, the publisher accepts  
no responsibility for any errors and/or omissions.  
© Copyright Adore Home Magazine 2025. Copyright of  
articles and photographs in Adore Home Magazine  
remain with the individual contributors and may not  
be reproduced without permission.





EDITOR'S  
LETTER

Courtyard  
House

I love this dreamy Gold Coast home with its peach-coloured rendered walls, travertine crazy paving, and plunge pool. The homeowners have made clever use of a small backyard. Check out the full home tour from page 60.

I have to say, one of the perks of my job is visiting so many beautiful homes. And for this issue, I had the pleasure of touring all four of the homes we've featured – lucky me!

Each of these stunning coastal houses has its own distinct take on modern Mediterranean style. At *Adore*, we've long been fans of modern Mediterranean design, which has exploded in the past few years (we did a Mod-Med issue back in summer 2022), and we don't see its popularity waning any time soon. With their arches, travertine, and creamy rendered walls, the homes we've featured this time around share similarities, but they also demonstrate how versatile and customisable Mediterranean elements can be.

If you've got a kitchen reno on the horizon (or you continually dream of one!), you'll want to check out our kitchen trends feature. We count down the top 10 hottest directions in kitchen design this year,

from sleek integrated cabinetry handles to eye-popping Viola marble.

Perhaps a holiday is calling your name? You'll find inspiration in our travel feature on Byron Bay. For lovers of good design, there is so much to devour in Byron – I can't wait to get back there.

One last thing: I have exciting news! I've finally sold Higlett House and looking to buy a new home. While I wait out the extra-long settlement period, I'll be busy planning and looking for inspiration, which will include poring over the pages of this issue of *Adore*. I think a rustic Spanish-style kitchen might be on the cards...

I hope you enjoy this issue. Also keep an eye on our @adoremagazine Instagram – I plan to share updates on my next home reno journey with you soon. Happy reading!



PHOTOGRAPHY COASTPARK CREATIVE



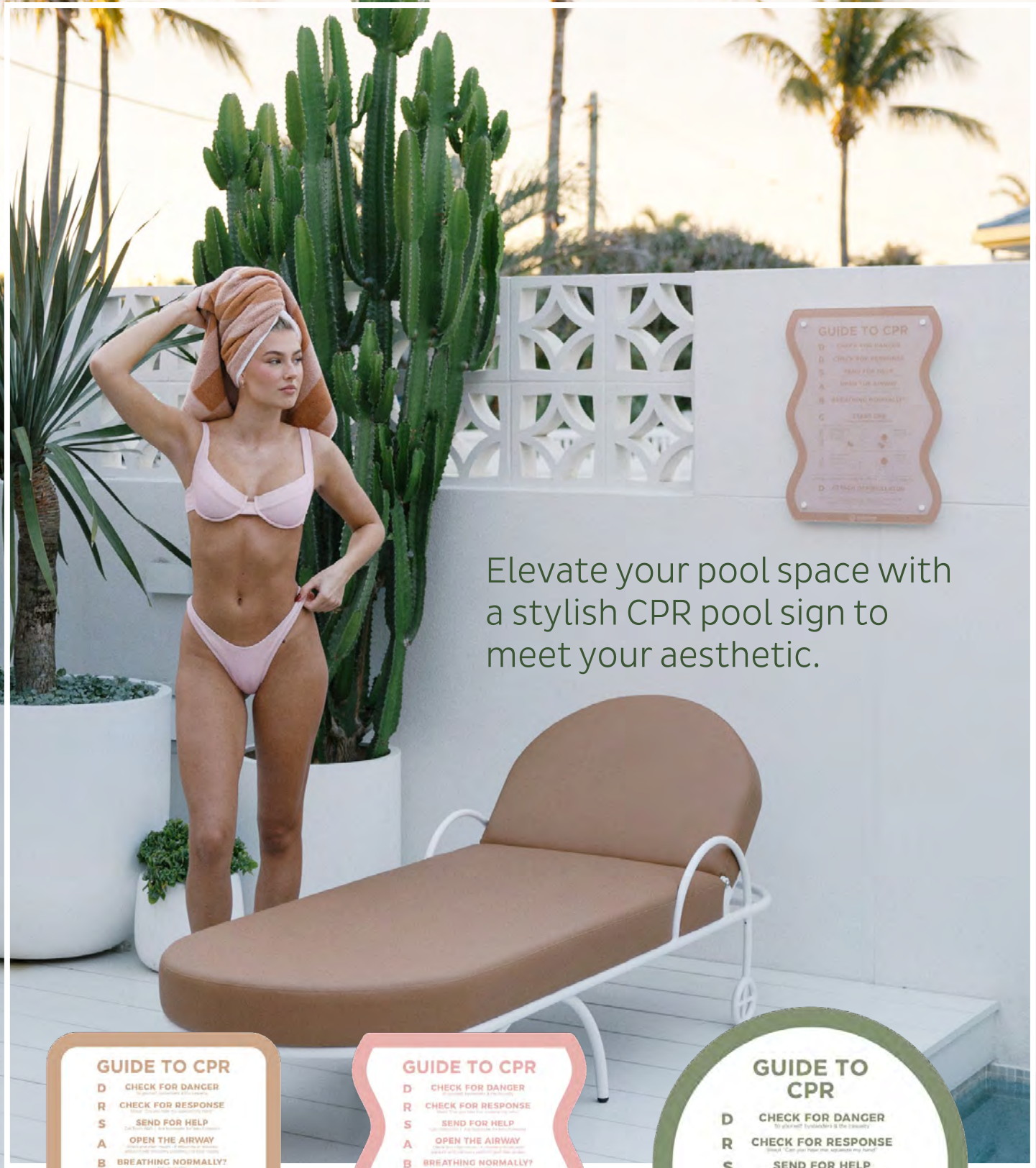
Aussie design  
for every home.

Warm  
Brushed  
Nickel

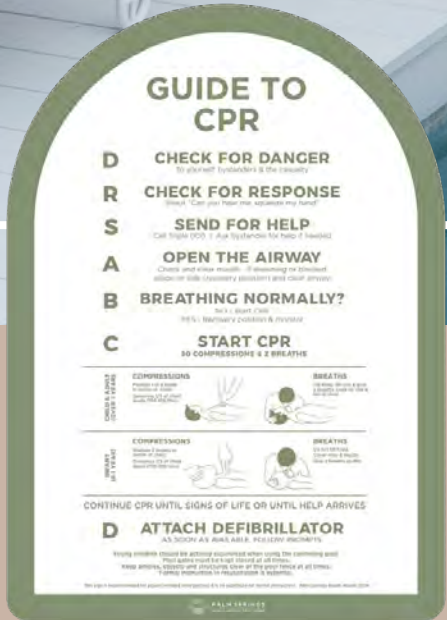
yabby

Project: @oasisbathroomsandkitchens  
Photography: Andrew Warry





Elevate your pool space with a stylish CPR pool sign to meet your aesthetic.



[www.palmspringsbeachabode.com.au](http://www.palmspringsbeachabode.com.au)  
 Follow us on Instagram @palmspringsbeachabode  
 Australian made / Compliant with Australian pool standards



# WHAT'S NEW

The latest in homewares, interior trends and kitchen products.

PHOTO COURTESY OF BUREAUX





## GREEK ISLANDS

Bring a slice of Greece home with these finds in a palette of creamy travertine and soft blue.

COLOUR PALETTE

**ART** The Print Emporium 'Santorini Skyline II' photo art print from \$149 theprintemporium.com.au / **PENDANT LIGHT** Honore Deco rope parasol pendant (medium) \$680 and lighting kit in bronze \$119 tigmitrading.com / **CUSHIONS** 'Everett' cushions \$89.95 each bedbathtable.com.au / **TILES** ABI Interiors 'Ravello' travertine inverted finger mosaic tile (305 x 318 mm) \$35 per sheet abinteriors.com.au / **BUTTERFLY CHAIR** 'Hawa' rattan butterfly chair \$1,195 kulalaliving.com.au / **CRAZY PAVE** Eco Outdoor 'Chambon' crazy pave eco-outdoor.com / **URN** 'The Zumi' pot \$299.95 blacksaltco.com / **CHAIR** 'Rhimpee' timber and leather dining chair \$675 kulalaliving.com.au / **PAINT** Tint 'Ol' Blue Eyes' wall paint 1L \$59 tintpaint.com.au / **CANDLE HOLDER** Paola & Joy 'Zoe' candle holder \$139 paolaandjoy.com.au / **SIDE TABLE** 'Roma' side table (travertine finish) \$469 lifeinteriors.com.au / **UMBRELLA** Basil Bangs Luxury Parasol in sapphire/white \$550 basilbangs.com

# KULALA Living

Timeless pieces that seamlessly blend comfort, quality & style.

Exclusive Discount

Exclusive for ADORE readers:  
Enjoy 10% off with code

ADORE10

KULALALiving.com.au

SHOP THE LOOK  
Amani Dining Table \$2,949  
Meera Stump Stools \$199  
Anawa Vase from \$119







**MIRROR** 'Amelia' oak floor mirror \$799 [lifeinteriors.com.au](#) / **BED** 'Amalfi' boucle queen bed \$1,799 [lifeinteriors.com.au](#) / **LAMP** Paola and Joy 'Evie' table lamp in sand \$249 [paolaandjoy.com.au](#) / **PLACEMAT** 'Poppi' scallop placemat in pearl \$49 [earlysettler.com.au](#) / **SIDE TABLE** 'Ditto' side table in burl \$999 [fform.life](#) / **POTS** Sol Studio ceramic stone wash scalloped vessel in white \$99.95 and terracotta \$69.99 [lifeinteriors.com.au](#) / **BEDSIDE TABLE** Globewest 'Solstice' wave bedside table \$1,245 [lifeinteriors.com.au](#) / **RUG** Miss Amara 'Gerri' brown scallop washable rug (2.9 x 2m) \$549 [missamara.com.au](#) / **WALL SCULPTURE** Olka Studio 'Luna in Popcorn' \$1,050 [fentonandfenton.com.au](#) / **STOOL** 'Hedda' scalloped bar stool \$149.99 [templeandwebster.com.au](#)

The "Jigsaw" concrete coffee table is a true statement piece—its four elegantly irregular shapes offer endless versatility, whether stacked, repositioned, or styled to suit your space.



P & R STYLING





## GRANITE SEATING

Kave Home has launched its new 'Premium Collection' for autumn/winter '25. It includes the 'Granite' range of chairs, inspired by 1970s Scandinavian style: an armchair and two dining chair designs with rounded silhouettes upholstered in rich, two-tone chenille fabric in multiple colourways.

[kavehome.com.au](http://kavehome.com.au)

**INTRODUCING THE 'ROBBI' WALL SCONCE, A STRIKING FIXTURE CREATED BY MCMULLIN AND CO. IN COLLABORATION WITH FOLK STUDIO. TAILORED FOR CONTEMPORARY OR MID-CENTURY MODERN INTERIORS, IT CREATES A CAPTIVATING FOCAL POINT FOR ANY SPACE. PRICED AT \$449.**

[MCMULLINANDCO.COM](http://mcmullinandco.com)

# product NEWS

Yabby's new mirror cabinets come in three shapes (rectangle, arch and oval) with a choice of on-trend brushed brass, antique brass or warm brushed nickel finishes. With plenty of storage, they're ideal for upgrading your current setup or adding the finishing touch to a new bathroom. Priced from \$720.

[yabby.com.au](http://yabby.com.au)



*Elevate your interior style with Lurline Co.'s range of premium linen, including cushions, bedding and napery. Crafted from the finest 100% European flax fibres, the linen offers softness, breathability and durability. Pictured below: French flax linen sheet set (\$279 for king size) and 'Wave' cushion cover in burnt orange (\$60).*

[lurlineco.com.au](http://lurlineco.com.au)

## MOCHA MOUSSE

1

McMullin 'Bonnie' table lamp  
\$449 [lifeinteriors.com.au](http://lifeinteriors.com.au)

2

'Billie' armchair in Teddy Boucle  
\$999 [loungeovers.com.au](http://loungeovers.com.au)

3

L&M Home 'Gia' reversible  
linen cushion in Mocha \$88  
[lmhome.com.au](http://lmhome.com.au)



**GET THE DESIGNER LOOK FOR LESS WITH ADAIRS' NEW RANGE OF ON-TREND DECOR AND FURNISHINGS. OUR PICKS ARE THE 'NOLA' SIDE TABLE (\$229.99) AND THE 'CLAPTON' TABLE LIGHT (\$89.99), BOTH IN 'HAZELNUT'.**

[ADAIRS.COM.AU](http://adairs.com.au)

# Where Design Meets Function

Tapware | Sinks | Tiles | Showers | Hardware | Accessories



*Featuring Elysian Minimal Mixer & Spout Set in Brushed Copper, and Zuri Round Undercounter Basin in Matte White.*





Adp

Vanities | Basins | Baths | Mirrors | Tapware + More  
[www.adpaustralia.com.au](http://www.adpaustralia.com.au)



# kitchen TRENDS

2025

We serve up the hottest kitchen trends for 2025, from Viola marble to integrated handles, and everything in between.

INTERIOR DESIGN + PHOTOGRAPHY INVENTORY INTERIOR





★  
“Viola marble is particularly appealing for its striking contrasts and dramatic tones, which can vary between deep purples, browns, reds or burgundies depending on the slab”

- MARIAM ABDELKARIM

MATERIAL PALETTE



New Age Veneers  
Navurban ‘Tablelands’  
Worldstone ‘Viola Marble’  
Lo & Co ‘Isla’ Pull XL \$79

Bold stone like Viola marble is set to be the hottest trend in kitchens this year. Interior designer Mariam Abdelkarim of Inventory Interior designed the stunning kitchen pictured above, featuring Viola marble as the star of the show.

The recent ban on engineered stone means there is a strong movement towards natural alternatives. “The shift towards natural stone isn’t only due to the ban,” Mariam adds. “It’s also driven by evolving design trends that prioritise materials with organic textures, timeless beauty, and a connection to nature.”

“Viola marble is bold and captivating, with deep veining and rich colour tones that instantly draw the eye. What I love most about using natural stone like Viola is its unique character; each slab is one-of-a-kind, showcasing dramatic veining that engineered materials cannot replicate,” says Mariam.

“Timber was chosen to complement and enhance the dramatic tones in the Viola marble. Its warm earthy hues draw out the deeper colours in the stone veining, creating balance and depth. Pairing Viola with all-white cabinetry wouldn’t have had the same effect—it’s the timber that grounds the design and highlights the marble’s natural beauty.”



PHOTOGRAPHY ARNE STUDIO / INTERIOR DESIGN ALCHEMISTS ID

★  
“I think the real hero is the marble, as it ties everything together. This Onde Rosa has an almost gelati look to it, which makes it look nice and soft.”

- GEORGIE FRIED

2 trend TEXTURAL WHITE

The popularity of white kitchens isn’t slowing down any time soon, but the trick to getting it right is to introduce texture to keep it from falling flat. Interior designer Georgie Fried of Alchemists ID designed this kitchen for a client who wanted a fresh, neutral and calming palette for their house.

“We used lots of textures and finishes to bring the white elements alive,” says Georgie. “The kitchen included American oak crown-cut veneer doors with a ‘Vivid White’ 2Pac finish over it – we used the oak so that the grain showed through and wasn’t just a flat door panel. We paired it with whitewashed American white oak shelving and Venetian plaster on the rangehood. The beautiful stone from CDK is Onde Rosa marble; this brought the whole kitchen alive and gave it the warmth that it needed.”

White battens on the island add another element of tactility. “We curved the base of the island on both ends so that it continued with the rounded theme and didn’t cut off sharply once it got to the column end.”

Oversized pendant lights from MCM House were the perfect finishing touch for this kitchen.

INTERIOR DESIGN + PHOTOGRAPHY INVENTORY INTERIOR





PHOTOGRAPHY SOPHIE MILLER / DESIGN + BUILD GIA RENOVATIONS (OLIVIA CIROCCO)

### 3 trend CURVES

Kitchens typically involve a lot of straight lines, so introducing curves is a great way to soften your space. Whether it's in the cabinetry, island benchtop, lighting or even adjacent joinery – like this bench seat pictured above – curves make a statement.

Interior designer Olivia Cirocco of GIA Renovations, who designed the kitchen and dining nook above, says curves are trending right now. “We’re seeing more curves through joinery design, particularly because they help integrate the kitchen into open-plan living spaces, making the joinery feel like furniture,” says Olivia. “Soft curves create a connection between the kitchen and dining areas, elevating the overall design. This adds a refined touch, making the kitchen feel like a natural progression of the living space, rather than a separate area.”

“Adding curves to kitchen cabinetry and joinery is definitely more complex and costly, but I believe the stunning results are well worth the effort.”



MATERIAL PALETTE



Earp Bros 'Regency'  
48mm square white  
matt mosaic tile \$194/m²  
Laminex 'Rock Maple'  
Dulux 'Snowy Mountains'  
half strength

PHOTOGRAPHY NAT SPADA / INTERIOR DESIGN ORTON HAUS

### 4 trend TILED ISLAND

Tiles offer an affordable option for creating a show-stopping island – and the sky's the limit when it comes to the styles and colours available.

Justine Orton of Orton Haus selected a square mosaic tile from Earp Bros for this kitchen island. “The mosaic design allows for an easy installation on the curved island bench, making it a practical yet stylish choice,” Justine explains. “These tiles are also cost-effective, while adding texture and interest to the space.”





# 5 *trend* **TIMBER CABINETRY**

Regardless of the shade, timber cabinetry (real or melamine) will continue to dominate kitchen trends this year. Homeowners are wanting to inject warm natural tones into their homes, making timber a popular option.

Interior designer Tameka Moffat chose New Age Veneers 'Balmoral' for the cabinetry in this kitchen at The View in Gerringong (pictured this page). "This is an Airbnb in a picturesque seaside town with breathtaking water views, so we carefully selected materials and finishes that not only withstand the coastal environment but also complement the surrounding natural beauty," says Tameka.

6

*trend*  
**TAJ MAHAL QUARTZITE**

In 2024, we saw the rise in popularity of Taj Mahal quartzite, and we don't see it ending in 2025. This beautiful neutral stone with soft veining and beige tones is a perfect accompaniment to timber cabinetry.

Interior designer Tameka Moffat selected Taj Mahal quartzite for the kitchen pictured on this page. "We selected it for its exceptional durability, making it an ideal choice for kitchen spaces. As a quartzite, it not only offers remarkable strength but also adds timeless elegance to the design," she explains.

The curved rangehood is wrapped in the same stone, creating a flawless look.



PHOTOGRAPHY NAT SPADA / INTERIOR DESIGN TAMEKA MOFFAT BUILD FUTURE FLIP / JOINERY VICELLO KITCHENS

# JAMES LANE

JAMESLANE.COM.AU



**RILEY MODULAR SOFA**  
Modular flexibility lets you create the perfect seating arrangement, while removable, washable covers keep it looking effortlessly fresh. Style, comfort, and practicality in one.



# 7 trend

## TRAVERTINE

Travertine is certainly having a moment right now. Whether it's used for flooring, bathrooms or kitchens, it's easy to see why it's so alluring.

Interior designer Katie Soineva of SMUB chose travertine for this kitchen. "Travertine benchtops are not only a functional surface but a striking art feature, which can transform any space into a serene oasis," says Katie. "I selected it for its unique texture and warmth, and the calming presence that the natural stone provides."

Fluted travertine on the front of the island bench gives the space a wow factor.

PHOTOGRAPHY: COAST PARK CREATIVE / FURNITURE SELECTIONS: STUDIO BECK  
BUILD: QUEENSLAND COAST CONSTRUCTIONS / MATERIAL SELECTIONS: SMUB

# BUILD MAT

Flow with elegance



[buildmat.com.au](http://buildmat.com.au)





# 8

trend  
**MODERN  
FARMHOUSE**

We predict that 2025 will see the return of homely kitchens with rustic charm. Minimalism is out and layered spaces are in!

Billi Drury and her partner Callan have renovated 'Hunter Cabin' – their Airbnb in Byron Bay – with a modern farmhouse aesthetic. In the kitchen they used handmade tiles for both the splashback and benchtop, and incorporated timber shelving and rendered walls. Billi even handmade the plaster pendant lights herself. "It allows me to infuse the space with a bit of our story and personality, making Hunter Cabin feel like a truly unique and heartfelt retreat," says Billi.

Ceramics, books and art give the space a lived-in feel. Adding to the natural colour palette are assorted jute baskets and products from The Dharma Door.



# 9 trend Zellige TILES

A return to handmade and tactile tiles for kitchen splashbacks is on the cards for 2025. Forget glossy ceramic tiles and lean into handcrafted options that have variation in colour. Zellige tiles originated in Morocco and are a strong trend for both kitchens and bathrooms this year. Each tile is irregular and unique, so your tiler may hate you – but the overall look is worth the work!



# 10 trend INTEGRATED HANDLES

Integrated handles are both sophisticated and practical. Interior designer Agathe Corbet of AMA Studio chose them for her own kitchen (pictured). "I love integrated handles because they create a clean and minimalist look. This specific design for the handles and partitions between the cabinets creates some rhythm and adds depth to the cabinetry. To keep that clean look, all the appliances have been integrated as well."

PHOTOGRAPHY LAUREN MILLER PHOTOGRAPHY INC. / INTERIOR DESIGN AMA STUDIO



business & pleasure co.®

BEACH • POOL • HOME • PATIO



## The Al Fresco Collection.

Distinguished by its refined design and masterful construction, the Al Fresco Collection is the quintessential choice for elevated outdoor living. With graceful proportions and carefully considered materials each piece brings style and versatility to any setting—designed for longevity, growing more inviting over time.

[businessandpleasureco.com.au](https://businessandpleasureco.com.au)





*Modern*  
Relaxhouse 'Freire' counter  
stool \$179 freedom.com.au

1



*Mediterranean*  
'Asha' teak & rattan  
barchair natural  
\$595 kulalaliving.com.au

2



*Farmhouse*  
'Rönninge' bar stool  
in green \$129 ikea.com.au

3



*Scandi*  
'Noris' paper cord  
bar stool \$529  
lifeinteriors.com.au

8



*Glek*  
Grazia&Co 'Diiva'  
swivel stool \$1,095  
graziaandco.com.au

4

TOP 8  
BAR  
STOOLS



*Chic*  
'Sebastian' boucle  
barstools (set of 2) \$289  
templeandwebster.com.au

7



*Contemporary*  
'Bobby' counter stool  
in Nutmeg/Merit \$505  
designbythem.com

6



*Rustic*  
'Coast' bar stool \$249 loungelovers.com.au

5

Refreshingly *simple*  
renovations

tilecloud



Thirroul Terracotta Look Matte Subway Tile



# lounge lovers

Design-led Living,  
Dining & Bedroom Furniture

Discover the  
full collection  
in-store & online

HOME TOUR

PHOTOGRAPHY COASTPARK CREATIVE

## HOME TOURS

We visit four homes that riff on  
the Mediterranean tradition with  
a modern twist.





# Pasadena PALMAS

Sarah and Aza Waters' latest project on the Gold Coast is a huge family home that's packed with outrageously fun and beautiful features.

**PHOTOGRAPHY** COASTPARK CREATIVE / **WORDS** CASEY HUTTON



*Home to follow*

*Check out the saved Instagram highlights to watch as this incredible home was built.*

 @bilinga\_beach\_abodes



*"Being bold and colourful brings fun to our family. This home represents our beach life."*

- SARAH WATERS





**ROOFTOP BAR** The top level of the home was designed for fun and entertaining. Overlooking Tugun Beach, it includes a bar, dining area, day bed and garden. The bar features tiles from Tile Trends laid in a chequered pattern. Wall sconces from We Ponder; umbrellas and cushions from Business & Pleasure Co.

No one could accuse Sarah and Aza Waters of dreaming too small. The couple's new build in Tugun is a flamboyant three-storey, five-bedroom family villa that's geared for good times. There's a gym, sauna and skate ramp on the ground floor. Two storeys up, a balcony pool is lined with giant palm trees growing through the eaves to the rooftop bar above.

When the couple tells the story of this project, it's clear that their main focus was their children. "Our vision was to design somewhere that they would want to hang around forever, have their friends over, and just enjoy it as much as we do," Sarah explains.

They bought the property off-market in August 2021. Although they'd previously renovated their family home and a set of holiday villas, both in the Gold Coast neighbourhood of Bilinga, this time they opted to demolish the house – it was riddled with asbestos and ultimately unsuitable for renovation.

They collaborated with architect Paul Toulson, "an amazing person who made all our dreams a reality, better than we could have imagined". The design prioritised privacy without compromising on natural

light, and worked upwards to maximise ocean views and provide space for the family to hang out together and separately.

The home's Mediterranean flavour – from its warm colour palette to its intricate ceiling moulding and Venetian rendered walls – reflects the couple's daydreams of European travel with their children. Their mood boards were dominated by European hotels, such as Hotel Miramalfi and Masseria Moroseta in Italy, combined with closer-to-home influences including Raes on Wategos and Brisbane's Calile Hotel. "But let's not kid ourselves," says Aza. "Walking around cobblestone streets was not on the wish lists of our 12-year-old, nine-year-old and six-year-old! So we incorporated it into our designs instead."

The build kicked off in February 2023 and took 18 months. "We decided to do owner-builder for the first time," says Aza. "We wanted to have more freedom, and we like to design on the fly." Alongside him was Scotty Benstead, their longtime friend and building supervisor, heading up a team of tradespeople "who became like family to us".

>

**PRETTY IN PINK** The home was painted in a cement paint from Murobond in a custom colour created specifically for Pasadena Palms. "Every wall was hand brushed by our amazing painter Nathan Beck," says Aza.



**POOLSIDE** The rooftop gardens were designed by LDG Landscape Architecture and installed by JSW Landscapes & Design early in the build, so the plants were fully established by the time the family moved in. Towels and pool floats from Pandanus and Palm; sun loungers and umbrella from Business & Pleasure Co.





**KIDS’ DINING** Arches feature throughout Pasadena Palmas, including on the children’s level. Oversized archways allow sea breezes to flow through and cool the home. Table and chairs from P&R Styling.



< “Aza took on a lot himself,” Sarah points out, “from project managing to laying all the tiles – and there were a lot of tiles!”

It was an ambitious build, with engineering challenges that began almost immediately. After the property’s soil was discovered to be white sand and shale rock rather than the clay they’d predicted, they had to redesign their footings to concrete piers. “It was a difficult and costly start but it was so crucial to get it right,” explains Aza.

The third-storey pool area also demanded clever engineering, and incorporating the enormous Livistona palms was, he says, “one of the craziest stories of the build”. “When we realised the radius of each hole in the rooftop was 900mm and the root balls of the palms were 1200mm, the maths simply said they needed to be in before the formwork steel-and-concrete roof. How they survived being installed at that stage of the build is incredible.”

>



at a glance

Built over four spectacular levels, this Gold Coast home takes inspiration from luxe European hotels. It’s fun and spacious enough to evolve with the family’s needs and is packed with bespoke design features.

880m²

5

3½

5

**KIDS’ LIVING ROOM** Sofa from Castlery; coffee table from P&R Styling; bowl from The Kindred Trader.





**VENETIAN WALLS** “We have Venetian rendered walls throughout the house. The workmanship by Jarryd from No Waves Render Co. was incredible,” says Sarah.



**GIRLS' BATHROOM** Mirror from McMullin; pendant light and custom basins from Form Ceramics; vanity by Mosh Joinery; floor tiles from Tile Trends.



**CHILLI'S BEDROOM** Bedside table from Lify; art prints by Britney Turner.

< The first floor of the home is dedicated to the kids and any lucky guests. It includes four bedrooms, a lounge, kitchenette, two powder rooms, two bathrooms and a large laundry. The 3.8-metre ceilings on this level draw the eye upwards to marvellous ornamental cornices. “We fell in love with them so much that we even have them in the garage – the garage door opens sideways for uninterrupted ceiling views,” says Sarah.

The helical staircase they built at their previous renovation is replicated here on a larger scale using poured concrete, connecting the children’s floor with the main living hub above.

The emphasis on bespoke artisanal products and applications is perhaps what ties the home most strongly to its Mediterranean muses. Despite the project’s size and scale, the work of human hands is evidenced around every corner – from the Venetian rendered walls, plaster cornices and custom joinery inside, to the painstakingly hand-brushed cement paint on the external walls. Custom ceramic basins in the bathrooms were made locally, and scores of bespoke wall lights and pendants illuminate the home in the evenings.

@bilinga\_beach\_abodes



**FRANKIE'S BEDROOM** Art print by Tahnee Kelland; bed from Life Interiors; bedside table from Bed Threads; linen from SOL Linen; pendant light from Her Hands; cushions from Pony Rider; blanket from Adairs.





**KITCHEN** One of Sarah and Aza's favourite features in the home is the custom cabinetry by Mosh Joinery. "We worked with them to design bespoke cabinetry throughout," says Aza. "It was so important to nail this, and we are so happy with the outcome." Pendant lights from Her Hands; tiles on island and splashback from Tile Trends; stools from Rachel Donath.



**LIVING ROOM** Sofa from ELLISON STUDIOS; coffee and side tables from P&R Styling; rug from Adairs.



**GUEST BEDROOM** Custom arch bedhead and striped cushion by Land Home; striped quilt cover and pillowcases from SOL Linen; floral cushion from The Kindred Trader; terracotta linen from Bed Threads; wall lights from McMullin.



**BATHROOM** Mirror from Middle of Nowhere; tiles from COCO Tiles and Mosaics; custom basin from Form Ceramics; vanity by Mosh Joinery.







**MAIN BEDROOM** Art by Danella Gillard; bedside tables from Sacred Bundle; lamps from Fenton & Fenton; bed from ELLISON STUDIOS; scalloped cushions from Adairs.



**ENSUITE** Floor tiles from Tile Trends; shower wall tiles from Jatana Interiors; custom basin from Form Ceramics; vanity by Mosh Joinery.



**BRAX'S BEDROOM** Wall light from Mayclay Ceramics; green linen and striped sheet set from SOL Linen; denim cushion from Pony Rider; brown cushion from Adairs; cream quilt and pillowcases from I Love Linen.



**LAUNDRY** Wall tiles and Sarah Ellison floor tiles from Tile Trends; cabinetry and handles from Mosh Joinery.





**UMBRELLA** 'The Club' patio umbrella in Rivie Mimosa \$1,199 [businessandpleasureco.com.au](https://businessandpleasureco.com.au) / **MIRROR** McMullin 'Linea' wall mirror \$629 [lifeinteriors.com.au](https://lifeinteriors.com.au) / **BOWL** 'Carnival' bowl in terracotta stripe \$99.99 [thebayroom.com.au](https://thebayroom.com.au) / **QUILT COVER** Terracotta duvet cover 100% French flax linen (queen size) \$249 [bedthreads.com.au](https://bedthreads.com.au) / **TILE** 'The Beach Club Scallop' tile by Sarah Ellison \$220 /m2 [perini.com.au](https://perini.com.au) / **POOL FLOAT** 'Harper' pool swim ring in green \$79.95 [pandanusandpalm.com.au](https://pandanusandpalm.com.au) / **ART** 'Hold On' art print by Tahnee Kelland from \$70 [tahneekelland.com](https://tahneekelland.com) / **PENDANT LIGHT** Scalloped pendant light in white (tall medium) \$650 [her-hands.com.au](https://her-hands.com.au) / **CUSHION** 'Cali' terracotta stripe cushion \$79.99 [adairs.com.au](https://adairs.com.au) / **SUN LOUNGER** The 'Al Fresco' sun lounger in antique white \$2,699 and cushion in Rivie Mimosa \$499 [businessandpleasureco.com.au](https://businessandpleasureco.com.au)



# Handcrafted for your home.

Made by hand in Southern Africa from 100% waste, and dried under the African sun.

Pendant lights that put people first.

Explore our collection



HER-HANDS.COM.AU

HERHANDSVILLAGE



# Villa PEARL

Set alongside one of the Gold Coast's  
glistening canals, Villa Pearl is as  
quietly elegant as its name suggests.

**WORDS** CASEY HUTTON / **PHOTOGRAPHY** COASTPARK CREATIVE

**BUILDING DESIGNER** VANGUARD BUILDING DESIGN

**BUILD** QUEENSLAND COAST CONSTRUCTIONS



Fifteen Pearl Key



HOME TOUR

When first-time builders Emily and Jamie Macdonald bought a prime block of land at Broadbeach Waters in 2022, they knew it was their chance to build a dream home for their young family.

They also knew it was important to assemble the right people to deliver on their vision. Their team included Ben Wade from Vanguard Building Design and builder Jackson Emblem from Queensland Coast Constructions. Beck Smith from Studio Beck advised on furniture, while Katie Soineva of SMUB handled material selections and specifications.

“Creating a resort oasis was the ultimate design goal for this home,” says Katie, for whom the waterfront location offered an exciting opportunity to showcase the home from both the street side and the rear, which opens out to the canal.

“The street presence of Villa Pearl instantly captures your attention,” says Emily. “Four dwarf palms beside the gate house give it that tropical, Mediterranean feel.”

At the home’s entrance – beneath an arched window and greenery draped from an elevated garden bed – a 6-metre-high void creates a real moment. “From upstairs, the void overlooks the Broadbeach high-rises. It’s so stunning at night when all the buildings are lit up,” says Emily.

Katie chose to use a uniform floor tile from the front door through the living space to the alfresco area and pool coping. “My design focus is to enter a home and know that every room marries to the next,” she explains. “This achieves a seamless flow and a true sense of home.”

A grand staircase is visible from the entryway, its soft curves repeated elsewhere, including the kitchen’s distinctive tiled rangehood and the lounge fireplace, which features floor-to-ceiling oversized curves in microcement. In the kitchen, a stone island bench is wrapped in inverted travertine flutes. “The travertine is just amazing to look at – a work of art,” says Emily.

Maximising water views was a key priority. The floorplan allocated an expansive 18 metres of width for the kitchen, living and dining zone, with 3-metre ceilings that flood the lower floor with natural light. A generous glass sliding door opens the space onto the outdoor entertaining area and pool overlooking the waterway.

**BACKYARD** “We planted two Canary Island palm trees by the pool to offer shade from the afternoon sun,” says Emily. Sun loungers from MCM House; umbrella from Basil Bangs; pool floats from Petites Pommes.

★  
“Given that we live in a holiday destination close to the beach, we really wanted our home to feel like we were on holidays all year round.”

- EMILY MACDONALD







**PATIO** "The alfresco area has a built-in barbecue and mini bar fridge, so it's the perfect set-up for entertaining and pool swims," says Emily. Outdoor table from Blend Concrete Design; chairs from MCM House.







**MAIN BEDROOM** Bed from Zenn Design; side tables from CLO Studios; vase by ivanaloves Ceramics; wall lights from We Ponder; linen bed cover from Cultiver; cushion from Jordan.



**BOY'S BEDROOM** Custom wave bedhead from Zenn Design; side table from Black Salt Co; lamp from Jordan.



**ENSUITE** “We really wanted that feeling like you're in a day spa – it's very calming,” says Emily. Tapware and basins from ABI Interiors; microcement walls by Txture; tiles from Stone Style; wall lights from Lighting Collective; mirror from Future Glass; towels from BAINA.

< Of course, the canal-side site also demanded that privacy and the durability of outdoor materials be considered. Emily and Jamie opted for high fences lined with palms along the sides of the home, while sheers and blackout blinds shield all of the rooms. Two mature Canary Island palms, planted alongside the pool, offer shade from the afternoon heat. “Our outdoor furniture was also chosen to be able to handle the waterfront exposure and sun,” Emily explains.

Inside, the atmosphere is serene. A curated combination of neutral tones, organic textures and undulating lines achieve a feeling of refinement and harmony. Emily describes how their tastes gravitated towards “minimalism, natural light, travertine, a touch of Mediterranean vibes, and brushed brass finishes”.

This autumn will see Emily and Jamie getting to know their new baby girl – their second child – at Villa Pearl. “We’re so excited to create lots of family memories in our new home,” says Emily. “We poured our heart and soul into this build and it's like a dream come true that we get to wake up here every morning.”

@villa\_\_pearl





**KITCHEN** Custom travertine flutes on the island make a statement in the kitchen. Cabinetry in Polytec 'Soft Walnut Ravine'; bar stools from Grazia & Co; handles from Lo & Co; tapware from ABI Interiors.



**LIVING ROOM** "We incorporated a large arch window that looks out to the pool, feature palm tree and canal," says Emily. Sofa from King Living; custom bouclé armchair by fform; travertine coffee table from Casa Blanco; vase from The Foundry House.







**NURSERY** Rocking chair and ottoman from Nuage Interiors; pendant light from Georges Store; cot from Sacred Bundle.



**STUDY** Desk from En Gold; office chair from IKEA; art by Emma Martin.



**DINING** Table from En Gold; dining chairs from Casa Blanco; art by Emma Martin.



**SITTING ROOM** Sofa and coffee table from fform; armchair from Jardan.

*at a glance*

Located on the Gold Coast, this stunning two-level home has Mediterranean influences, including arch windows, microcement walls and travertine features. The creamy colour palette sets a serene tone for this young family's home.



350m<sup>2</sup> 4 3 2





PHOTOSHOOT  
LOCATION

This stunning Gold Coast home is  
available to hire for photoshoots.  
Email Emily at  
villa\_pearl@outlook.com to book.

RETRO UMBRELLA CO

TRANSFORM YOUR SPACE WITH OUR LUXURIOUS, DOUBLE-TIER UMBRELLAS

VISIT: [WWW.RETROUMBRELLA.CO](http://WWW.RETROUMBRELLA.CO)

SHOP  
THE LOOK

COLOUR PALETTE

**ARMCHAIR** GUBI 'Pacha' lounge chair \$3,999 bodhiliving.com.au / **POOL FLOAT** 'Calile' pool float (120cm) \$93 petites-pommes.com / **UMBRELLA** Basil Bangs 'Caspar' keyhole valance umbrella (2m) in sage/white \$1,699 basilbangs.com / **TOWELS** Baina 'Classic' bathing set of towels in sage \$489 shopbaina.com / **VASE** 'Boheme' vase in ivory \$440 thefoundry.house / **TILES** 'Byron' travertine look tile in ivory matte \$70/m<sup>2</sup> tilecloud.com.au / **LAMP** 'Nelly' table light in Low Mist \$620 jordan.com.au / **SUN LOUNGER** 'Rowe' outdoor sun lounge \$2,195 mcmhouse.com / **CUSHION** 'Poppy' long rectangle cushion in Pond \$285 jordan.com.au / **SIDE TABLE** 'The Pantai' side table \$449.95 blacksaltco.com



**INTERNAL COURTYARD** “We love the green space in the courtyard, which was created in collaboration with Studio Workshop Architects and JSW Landscapes and Design. It features a 40-year-old olive tree too.” The family’s assortment of surfboards and bikes are cleverly hidden behind the timber screen doors.



# COURTYARD HOUSE

The Bowden family's home is a tonal and textural dream, filled with meaningful elements that reflect their active yet grounded lifestyle.

**WORDS** NICHOLA DAVIES / **PHOTOGRAPHY** COASTPARK CREATIVE  
**ARCHITECTURE** STUDIO WORKSHOP / **BUILD** COAKERS BUILDING SERVICE  
**INTERIORS + STYLING** SUN HOUSE STUDIO







**BACKYARD** This Palm Beach home is just steps away from the seaside. A private gate at the rear of the backyard provides access to the beach. A plunge pool, built-in bench seat, patio and pizza oven create the ultimate entertainer's house.



*"I have always loved interior design and decorating, so it was fun to be able to design and decorate my own home."*

- MARISSA BOWDEN



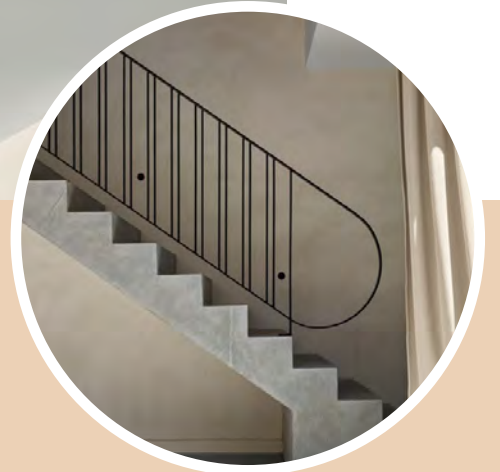
Ten years ago, Marissa Bowden and her husband Rick purchased a rundown shack – its purple paint peeling with age – on their dream street at Palm Beach on the Gold Coast. For seven years, they raised their two daughters (now aged 13 and 11) in the purple house, running down to the beach for morning swims and surfs, and spending many afternoons with family, friends and neighbours.

Marissa, who owns multipurpose creative space Sun House Studio, explains that there came a time when the shack needed work, but it wasn't in any state to be renovated. Marissa and Rick engaged local firm Studio Workshop Architects to design a new home in its place.

Because the family had already lived there for years, they had a thorough understanding of how they liked to use the space and the lifestyle that they wanted to create for themselves. It included plentiful natural sunlight, high ceilings, green space and a sense of calm.

"I really love a calming colour palette, and one of my briefs to the architects when designing the home was 'no white please,'" says Marissa. "I wanted earthy tones, walnut timbers, concrete, natural stone, thoughtfully selected furnishings and concrete – for the ease of seaside living with a family."





**STAIRCASE** “My husband Rick has his own structural steel company, so it was great to be able to have him heavily involved in the build, doing all of the structural steel in the home, as well as our internal balustrade,” says Marissa.


< “I also love a home to feel like a home, not a showroom, so I didn’t want any stark white, and I wanted to personally select furniture that felt meaningful, supported local businesses where possible, or had a story to tell. I love that our concrete is imperfect; I also love the contrast of the concrete with the softness of the render, curtains and warm timbers.”

The Bowdens created a custom colour with their renderer for the interior and exterior of the home, making it a standout feature that pairs wonderfully with the raw natural selections chosen, including travertine, Venetian render, walnut cabinetry, and brushed concrete flooring.

The imperfectly perfect character of the home made crazy paving a natural choice for its external areas. A 40-year-old olive tree and an outdoor pizza oven also play beautifully into the home’s Mediterranean feel.

While Courtyard House has many special elements, of particular significance are the living-room shelving and the arbours outside, created from salvaged and restored timber from the much-loved original beach house. “We wanted to keep the legacy of the old shack,” observes Marissa, whose girlfriends also gifted the family a painting of their former home by Gabrielle Diamantis.

While the old shack has a nostalgic pull for the family, their new house affords them their dream lifestyle – where they can watch the sunrise from upstairs in the morning, walk straight off the beach into an outdoor shower, swap surfboards for bikes and go for an afternoon cruise, stroll down the lane to local restaurants, or entertain family and friends by the pool.

 @\_courtyard\_house\_

**KITCHEN** Marissa says the kitchen is her favourite space. “The kitchen area is the heart of our home. I love that you can seamlessly flow from inside to outside, entertain or retreat. It feels really good to live in this space – incense is always burning and music is always on.”





**LIVING ROOM** The living room looks out to the internal courtyard. Rug from Armadillo; vintage leather sofa and chair from CULTKÁ; coffee table from Coco Republic; GUBI floor lamp from Bodhi Living.



**MAIN BEDROOM** Rug and cushion from Pampa; bed linen from Cultiver; bedside table from Coco Republic; GUBI pendant light from Bodhi Living.



**ENSUITE** Floor tiles from Three Balls Red; wall lights from Volker Haug Studio; tapware from Sussex.



**LOUNGE ROOM** Sofa and coffee table from ELLISON STUDIOS; art by Jai Vasicek.





**STOOL** ELLISON STUDIOS 'Pierre' bar stool \$699 lifeinteriors.com.au / **PENDANT SHADE** Honore Deco raffia parasol pendant (medium) \$680 tigmitrading.com / **CUSHION** Pampa 'Rosana' XL lumbar cushion in sand & black \$345 pampa.com.au / **ART** 'Man at the Flower Market' print by Brittany Ferns from \$300 brittanyferns.com / **HAND TOWEL** Baina 'Josephine' hand towel in tabac & noir \$49 shopbaina.com / **LINEN** Cultiver linen duvet cover set (Queen size) in cedar stripe \$450 cultiver.com.au / **WALL LIGHT** Volker Haug 'Anton' mini ceramic wall light \$990 volkerhaug.com / **OUTDOOR CHAIR** inartisan 'Bahir' outdoor lounge chair \$890 inartisan.com / **INCENSE BURNER** 'Ester' brass incense burner \$119 mcmullinandco.com / **COFFEE TABLE** 'Nobu' round coffee table \$2,345 cocorepublic.com.au / **RUG** Armadillo 'Acacia' rug in fawn from \$1,600 armadillo-co.com

# BUILD MAT

Crafted for Style and Functionality



buildmat.com.au



# SABBIA

This apartment on Queensland's  
Sunshine Coast is a chic  
Mediterranean-inspired sanctuary.

**WORDS** CASEY HUTTON / **INTERIOR DESIGN** ROSE CO. BY DESIGN  
**PHOTOGRAPHY** COASTPARK CREATIVE







**DINING** A custom-made bench seat curves around the bay windows overlooking the balcony garden, creating a cosy space to sit and eat. Dining table from Lounge Lovers; chairs from Rachel Donath; pendant light from Beacon Lighting.

**LIVING** Armchair from Eureka Furniture; coffee table from Temple & Webster; Viola marble side table from Fleur Studios; sofa from Kolbi; orb light from About Space Lighting.

Interior designer Ishoa Scozzafava of Rose Co. By Design had already decided on a concept before she even laid eyes on this Caloundra apartment. On the hunt for a property that they could revamp and sell, Ishoa and her husband Mauro (the team behind Creare Projects) made offers on a few apartments that fell through. For each one, Ishoa completed full designs and 3D renders to get an idea of costs.

“We wanted to deliver something different from what is out there in the Caloundra unit market – a luxurious, inviting apartment with modern retro touches,” she explains.

By the time they viewed this first-floor apartment in Caloundra’s CBD, Ishoa had a fully-fledged design direction with material selections that she could adapt to the space. The unit was an exciting prospect, she says. “It was very old and rundown – perfect for a renovation – and it had a private mature garden. There was natural light in all the rooms, which you don’t often get in units.”

The couple began by stripping the dreary interior, and Ishoa project managed all the trades during the reno.

While it’s light and bright, the apartment simultaneously feels enclosed and private,

thanks to its elevated position, surrounding greenery, and walled balconies. Ishoa’s design capitalised on this, re-envisioning it as a luxurious retreat from the beach-holiday scene outside.

Ishoa and Mauro made minimal adjustments to the floor plan, leaving all the plumbing in place to reduce costs. “The main bathroom saw the biggest change, as its walls were at very odd angles,” says Ishoa. “We knocked them down and softened the space with new curved walls.”

Carefully unified design elements were key to the success of the renovation. Curves are repeated in custom cabinetry in the kitchen, bathrooms, bedrooms and living area, reducing the harshness of the previously angular spaces. Clever storage features in all the rooms, reducing visual clutter, and integrated appliances in the kitchen give it a streamlined finish.

A Mediterranean-inspired palette of creamy neutrals and clay-coloured accents is set against natural plastered walls. Mood lighting (beautiful sconces by SØKTAS play a starring role) and organic shapes in furniture and artworks create a restful ambience.

In the kitchen, the island bench is held up by a white-tiled column, which neatly repeats the

form of an existing pillar between the kitchen and dining area. The choice of an open-sided island has lightened the space, giving it an airy feel that departs from the dated pokiness of the original U-shaped kitchen. The square white tiles are another repeated motif; used on multiple surfaces in the home, they provide a retro geometric counterpoint to the design’s curved lines.

The apartment’s punchiest feature is arguably the Sicilia Verde marble from Franca Design, which dominates the kitchen, reappears in the bathrooms, and is even featured in the dining nook’s bench seat. “I love the marble,” says Ishoa, explaining that it formed the basis of her earthy colour choices for the rest of the home.

The apartment is named Sabbia, meaning ‘sand’ in Italian – a nod not only to its European inspiration and its colour scheme, but also to the beautiful beach outside. Reflecting on the renovation, Ishoa says that their aim was to create a nourishing beachside haven. “We wanted the apartment to feel like a warm hug when you walk in.”

[@rose.co.bydesign](#)  
 [@creare.projects](#)





**BATHROOM** Mosaic tiles from Signorino; tiles on floor and wall from Casa Ceramica; wall lights from SØKTAS; mirror from Future Glass; basin from Art Bathrooms.

**KITCHEN** Stools from Royal Design; Sicilia Verde natural stone benchtop and backsplash from Franca Design; timber cabinetry in Polytec 'Natural Oak Ravine'; tiles on column from Signorino; handles from Lo & Co.



Top tips

Ishoa's tips on choosing key interior elements.

RENDER

"I love the texture and movement that can be created with render," Ishoa says. "Rockcote Otsumigaki is a versatile clay-and-lime mixed plaster; you can easily buff out imperfections if you mark it."

SCONCE LIGHTING

"Wall sconces elevate spaces. Make sure your plasterer knows that you are installing wall lights in a particular location, as sconces can pick up imperfections," Ishoa points out. "I really enjoyed using the hand-blown SØKTAS sconces in the primary bedroom and main bathroom. The way they illuminate the wall through the glass is spectacular."

NATURAL STONE

"Choose your natural stone early on when you're selecting finishes," Ishoa advises. "It's a luxury item for a renovation, so pick one that you love. Use some of the hues in the stone for the space – even if it's soft furnishings like cushions or throws – and it will always look like it's made for that location. Chef's kiss!"



**BEDROOM** Custom bedhead from Create Estate; side table from Temple & Webster; art from Olive et Oriel; wall lights from SOKTAS.



COLOUR  
PALETTE



**BOLSTER CUSHION** L&M Home 'Margot' mocha linen bolster cushion \$123 [lmhome.com.au](https://lmhome.com.au) / **PENDANT LIGHT** 'Amore' large pendant light \$469 [beaconlighting.com.au](https://beaconlighting.com.au) / **COFFEE TABLE** 'Wesley' oak coffee table \$369.99 [templeandwebster.com.au](https://templeandwebster.com.au) / **ART** 'Forme' by Marco Marella framed canvas art print (A3 size) \$74.95 [oliveetoriel.com](https://oliveetoriel.com) / **WALL SCONCE** 'Forte' wall light with yosh shade \$135 [aboutsace.net.au](https://aboutsace.net.au) / **STONE** Sicilia Verde natural stone P.O.A [franca.design](https://franca.design) / **BAR STOOL** AYTM 'Angui' bar stool in taupe (82.5 cm) \$616 [royaldesign.com](https://royaldesign.com) / **ARMCHAIR** 'Denham' fabric swivel chair \$1,699 [eurekafurniture.com.au](https://eurekafurniture.com.au) / **TOWEL SET** Temple & Webster 'Kai' cotton bath towel set (5 piece) \$99.99 [templeandwebster.com.au](https://templeandwebster.com.au) / **RUG** Elme Living 'Payton' modern rug in beige (160x230cm) \$499 [livingstyles.com.au](https://livingstyles.com.au)



Welcome to  
your happy place

Nurture your love for the great outdoors with 10% off all products at Hoselink\*. Whether you're passionate about pot plants or take pride in your lawn, you'll find an array of quality tools and accessories to help your garden thrive and your spirits soar. Use the code ADOREH10 at the online checkout to claim your exclusive discount.

[hoselink.com.au](https://hoselink.com.au)

# STEP OUTSIDE

Get the lowdown on the latest outdoor products.

\*T&Cs: Excludes bundles and sale items. Cannot be used in conjunction with any other offer. While stocks last. One use per customer. Discount code expires at 23:59 on 31.05.25.

## OUTDOOR NEWS

1 'Malih' planter  
\$295 [fewandfar.com.au](https://fewandfar.com.au)



2 'Classico' travertine crazy paving \$131.88/m²  
[marbleceramiccorp.com.au](https://marbleceramiccorp.com.au)



### MOD-MED STYLE

3 Weave 'Ottavio' cushion  
\$109.95 [lifeinteriors.com.au](https://lifeinteriors.com.au)



### CHASE THE SUN

The 'Hunter' outdoor sun lounger features rounded corners and an elegant profile. Made from acacia wood, its frame is naturally resistant to rust, mould, mildew and UV exposure. Priced at \$549. [templeandwebster.com.au](https://templeandwebster.com.au)



### A SLICE OF ST TROPEZ

Bring Mediterranean sophistication home with Retro Umbrella Co's new 'St Tropez' double-tier umbrella in classic white with navy trim. Embodying the elegance of the French Riviera, it's perfect for creating a resort-style ambience in your backyard or alfresco dining area. Priced at \$1,299.

[retroumbrella.co](https://retroumbrella.co)



Kulala Living's 'Jabari' dining table is crafted from hydro-dipped concrete to emulate the luxurious look of travertine. Perfect for both indoor and outdoor settings, it combines durability with contemporary design. Priced at \$1,995.

[kulalaliving.com.au](https://kulalaliving.com.au)

## outdoor NEWS



LIFESTYLE BRAND &SUNDAY HAS ADDED A NEW RANGE OF POOL FLOATS TO THEIR COLLECTION. THEIR OVERSIZED POOL TUBES (\$84.95) COME IN THREE STYLISH PATTERNS. OR OPT FOR A RESORT-STYLE LILO (\$139.95) FOR THE ULTIMATE POOL LOUNGING EXPERIENCE.

[ANDSUNDAY.COM.AU](https://andsunday.com.au)



With a flurry of new hotels and restaurants on the scene, Byron Bay is the hottest travel destination for creatives and design lovers.

PHOTOGRAPHY ANDY MACPHERSON  
INTERIOR DESIGN NYREE MACKENZIE

*stay*

SWELL HOTEL

Swell Hotel is a bohemian oasis in the centre of Byron Bay. The adults-only boutique hotel focuses on community, wellness and sustainability to encourage relaxation. Communal spaces are geared towards socialising; the alfresco and indoor lounge areas are perfect for gathering with a few friends or finding common ground with likeminded travellers.

The hotel's 16 rooms are decorated in rich earthy hues with plush materials. Choose from '70s-inspired rooms overlooking the pool or tropical gardens. Or, for a more secluded experience, hideaway rooms are tucked away from the hotel's main amenities. A glamorous two-bedroom suite is also on offer, with a private entrance, luxe living room, and its own garden with outdoor lounge.

Guests can enjoy complimentary daily yoga in the tipi, relax in the infrared sauna and ice bath, and take a dip in the Ozone magnesium pool. Book some extra pampering at the on-site wellness treatment room, which offers full-body massages and LED light therapy.

[swellhotel.com](https://swellhotel.com) [@swellbyronbay](https://www.instagram.com/swellbyronbay)

THIS PHOTO BY JESSIE PRINCE

BYRON BAY



*must visit*

The best homewares and lifestyle stores are found in the Byron Arts & Industry Estate. Add Bisque Traders, Habitat Collective, Pampa, Tigmi Trading and Vamp. Vintage to your list.

TIGMI

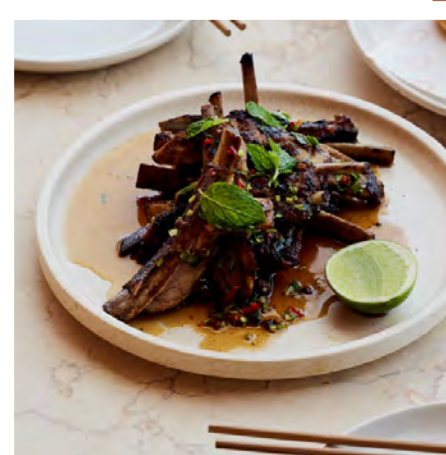
TIGMI TRADING PHOTOGRAPHY ALICIA TAYLOR

*shop*

## TIGMI TRADING

Perfectly capturing Byron Bay's eclectic, easy-breezy energy, Tigmi Trading offers enticing wares from across the globe. Founder and creative director Danielle McEwan's lifelong love of culture and discerning eye for art and design was cultivated over years of travelling for her career in the music industry. For Tigmi, she ventures around the world in search of one-off rugs, objects and art, hand-selecting each item. Danielle's only criteria when sourcing each piece is that it is made with love and inspires connection – adding an invisible but palpable layer of beauty and soul to the home.

[tigmitrading.com](https://tigmitrading.com) [@tigmitrading](https://www.instagram.com/tigmitrading)



VISIT

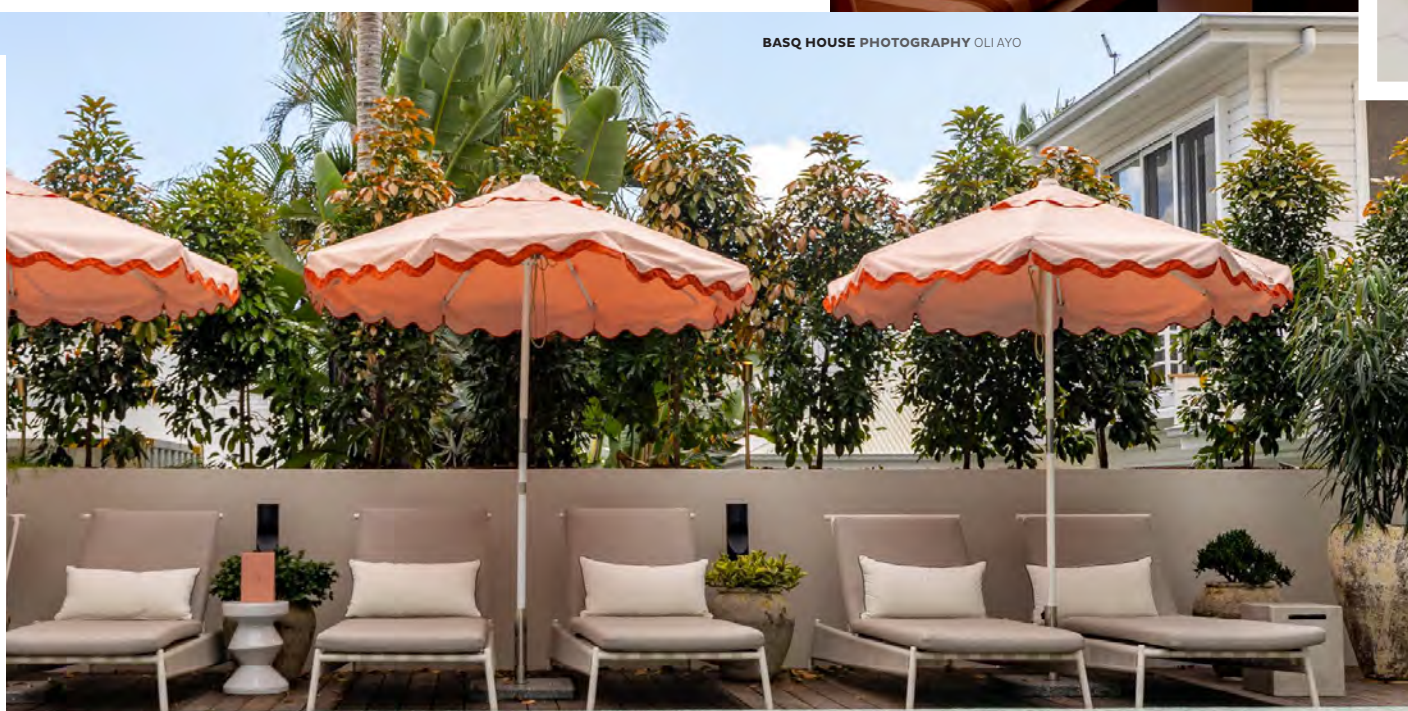
*stay*

## BASQ HOUSE

Basq House is a 32-room boutique hotel tucked into a quiet laneway in the heart of Byron Bay. Rooms are thoughtfully designed, with a soothing colour palette of neutral tones, and many overlook the hotel's gorgeous logo-embossed pool, which is surrounded by sun-drenched daybeds and cabanas. The magnesium pool is perfect for relieving stress, soothing sore muscles, and, of course, 'basqing' in the sun.

Guests have use of the hotel's LEKKER push bikes, beach shades and surfboards, and can even hire a dedicated guest share vehicle – ideal for taking in everything that Byron has to offer.

[basqhouse.com.au](https://basqhouse.com.au) [@basqhouse](https://www.instagram.com/basqhouse)



BASQ HOUSE PHOTOGRAPHY OLIAIYO



LIGHT YEARS PHOTOGRAPHY JESSIE PRINCE

*eat*

## LIGHT YEARS

Located in the Jonson Lane precinct, the reimagined Light Years restaurant oozes sophisticated coastal cool with natural textures and clay-coloured hues, thanks to interior architects Studio Plenty and designer Sarah Ellison.

Perch at the terrazzo bar for a drink (or two) or settle into one of the striped banquettes for a lengthy feast of modern Asian cuisine accompanied by punchy cocktails and good wine. Must-try dishes include the kingfish ceviche (pictured left), hot & tingly BBQ lamb ribs (pictured above) and pork belly bao buns.

[lightyearsasiandiner.com.au](https://lightyearsasiandiner.com.au)  
[@lightyearsasiandiner](https://www.instagram.com/lightyearsasiandiner)



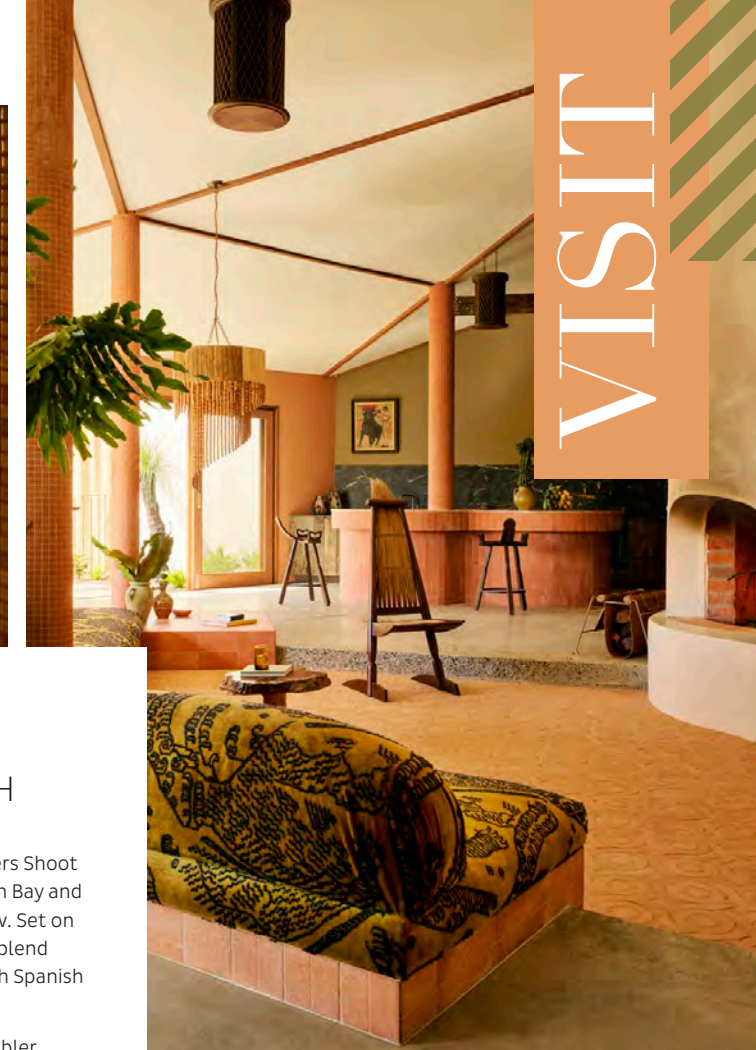


COAST  
PARK.

PHOTOGRAPHY + VIDEOGRAPHY

Servicing Brisbane, Sunshine Coast, Gold Coast and surrounds

coastparkcreative.com



*stay*  
SUN RANCH

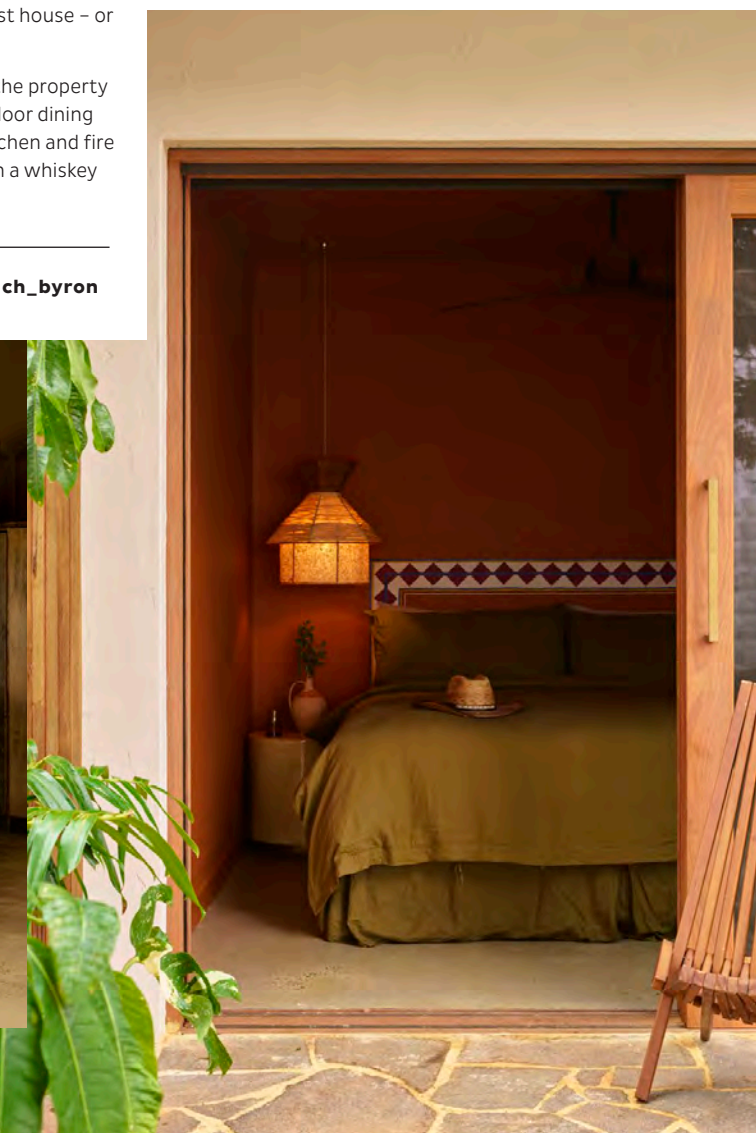
An exclusive estate nestled in the Coopers Shoot area, Sun Ranch is 15 minutes from Byron Bay and two minutes from the town of Bangalow. Set on 55 acres, it offers curated interiors that blend '70s California ranch-style nostalgia with Spanish influences.

Guests have the option to book The Rambler Longhouse – a five-bedroom luxury guest house – or one of six two-bedroom barns.

Unique gathering spaces dotted across the property include a 25-metre hillside pool; an outdoor dining space with Argentinian BBQ, alfresco kitchen and fire pit; a woodfired floating sauna; and even a whiskey lounge.

 [sunranch.com.au](https://sunranch.com.au)  [@sunranch\\_byron](https://www.instagram.com/sunranch_byron)

PHOTOGRAPHY ANSON SMART







HOTEL EXTERIOR + POOL PHOTOGRAPHY COASTPARK CREATIVE

*stay*

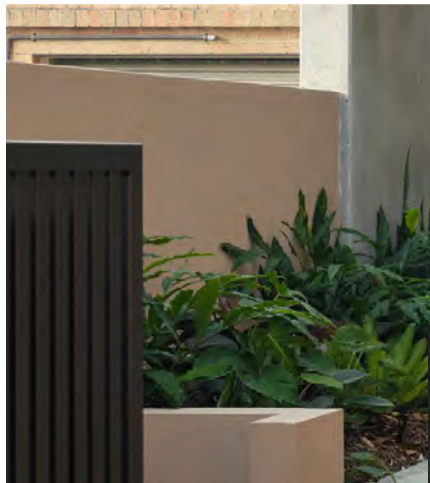
## HOTEL MARVELL

Experience Byron Bay's first five-star luxury hotel. The architecturally designed Hotel Marvell offers 16 rooms, six suites, and two two-bedroom rooms – all with sumptuous linens and premium amenities, including electric blackout blinds and a mini bar boasting the finest selection of locally sourced products.

Admire panoramic views of Byron Bay from the hotel's heated rooftop pool while you laze the day away in a poolside cabana or lounge. The best spot in town for afternoon drinks has to be Hotel Marvell's Mediterranean-inspired rooftop bar, Horizon, which is open to the public from noon until 10pm.

Guests can enjoy a complimentary a la carte breakfast at the hotel's onsite restaurant, Byron Bay Oyster Bar. Our tip: grab a table in the pedestrian laneway, flanked by tropical plants and cosy bench-style seating.

 [hotelmarvell.com.au](https://hotelmarvell.com.au)  [@hotelmarvell](https://www.instagram.com/hotelmarvell)

*must do*

The rooftop pool is the place to be for guests to unwind. Grab a drink and a snack from Horizon rooftop bar and laze the day away.



HOTEL INTERIOR + LANEWAY PHOTOGRAPHY DAVID CHATFIELD

RESTAURANT PHOTOGRAPHY ETHAN SMART

*eat*

## BYRON BAY OYSTER BAR

Located on the ground floor of Hotel Marvell, Byron Bay Oyster Bar offers the very best oysters and seafood from across Australia and New Zealand.

The restaurant plates up simple meals, with an emphasis on the quality of its produce. It takes the freshness of its oysters very seriously – boasting a huge land-based oyster tank that purifies and holds up to 500 dozen oysters at a time.


Don't miss Oyster Hour from Tuesday through to Saturday for \$3 oysters between 5pm and 6pm.

 [byronbayoysterbar.com.au](https://byronbayoysterbar.com.au)


 [@byronbayoysterbar](https://www.instagram.com/byronbayoysterbar)

*MORE TO EAT*


**PIXIE** brings a modern coastal twist to traditional Italian cuisine. Enjoy a cocktail and snack at the bar, sip a spritz on the terrace, or settle into the main dining room for lunch or dinner.

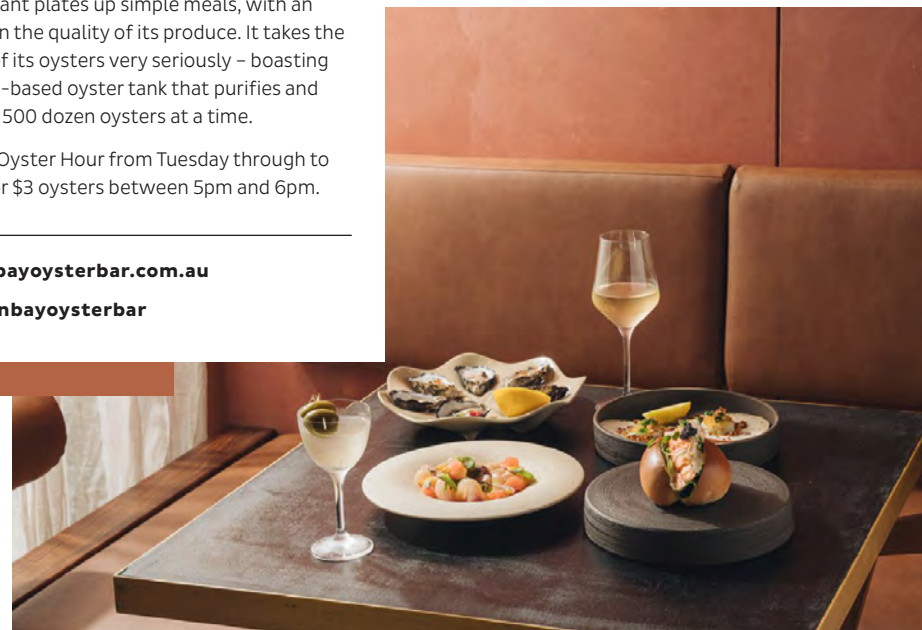
 [pixiebyronbay.com.au](https://pixiebyronbay.com.au)

**BANG BANG** serves up delicious Asian fusion cuisine, with classics like braised beef massaman, red duck curry, and pad Thai – plus inventive dishes including BBQ cauliflower and hot pineapple pie. Can't decide? Try their Bang-Quet!

 [bangbangbyronbay.com](https://bangbangbyronbay.com)

**NO BONES** offers a vegan menu with the freshest local produce and an Australian drinks menu. Try their famous konjac calamari strips (made from plants of course)!

 [nobones.co](https://nobones.co)







**UMBRELLA** Business and Pleasure Co. 'The Amalfi' umbrella in Rivie Black \$299 [businessandpleasureco.com.au](http://businessandpleasureco.com.au) / **BRONZER** INIKA organic baked mineral bronzer \$75 [inikaorganic.com](http://inikaorganic.com)  
**SUNGLASSES** Luv Lou 'The Poppy' sunglasses in Tortoiseshell \$160 [lumlou.com.au](http://lumlou.com.au) / **NECKLACE** eb&ive 'Heritage' necklace - 'The Compass' \$34.95 [ebandive.com.au](http://ebandive.com.au) / **SWIMWEAR** Baiia 'Tanami' reversible wrapsuit \$299 [baiia.com.au](http://baiia.com.au) / **TOWEL** Business and Pleasure Co. 'The Beach' towel in Monaco Black Stripe \$99 [businessandpleasureco.com.au](http://businessandpleasureco.com.au) / **COSMETICS CASE** Bon Maxie 'Handy Handle' case \$54 [bonmaxie.com.au](http://bonmaxie.com.au) / **HAT** eb&ive 'Halcyon' hat in natural \$49.95 [ebandive.com.au](http://ebandive.com.au) / **SUITCASE** July 'Carry On' in toffee \$375 [july.com/au](http://july.com/au)  
**SANDALS** Siren 'April' flatform sandals in natural weave & tan \$169.95 [sirensheoes.com.au](http://sirensheoes.com.au) / **PERFUME** Vanessa Megan 'August' 100% natural perfume (10ml) \$29.95 [vanessamegan.com](http://vanessamegan.com)  
**DRESS** Auguste 'Tania' midi dress \$249 [au.augustethelabel.com](http://au.augustethelabel.com)



Call us for an Authorised Stockist near you.

Ph 07 3806 5370

[www.xavierfurniture.com.au](http://www.xavierfurniture.com.au)





**Life  
interiors**



**Sydney**

505 Balmain Rd,  
Lilyfield NSW 2040

**Melbourne**

336-338 Johnston St  
Abbotsford, VIC 3067

**Brisbane**

31 Doggett St  
Teneriffe, QLD 4005

1300 873 595 | [sales@lifeinteriors.com.au](mailto:sales@lifeinteriors.com.au) | [www.lifeinteriors.com.au](http://www.lifeinteriors.com.au)